

# Trax

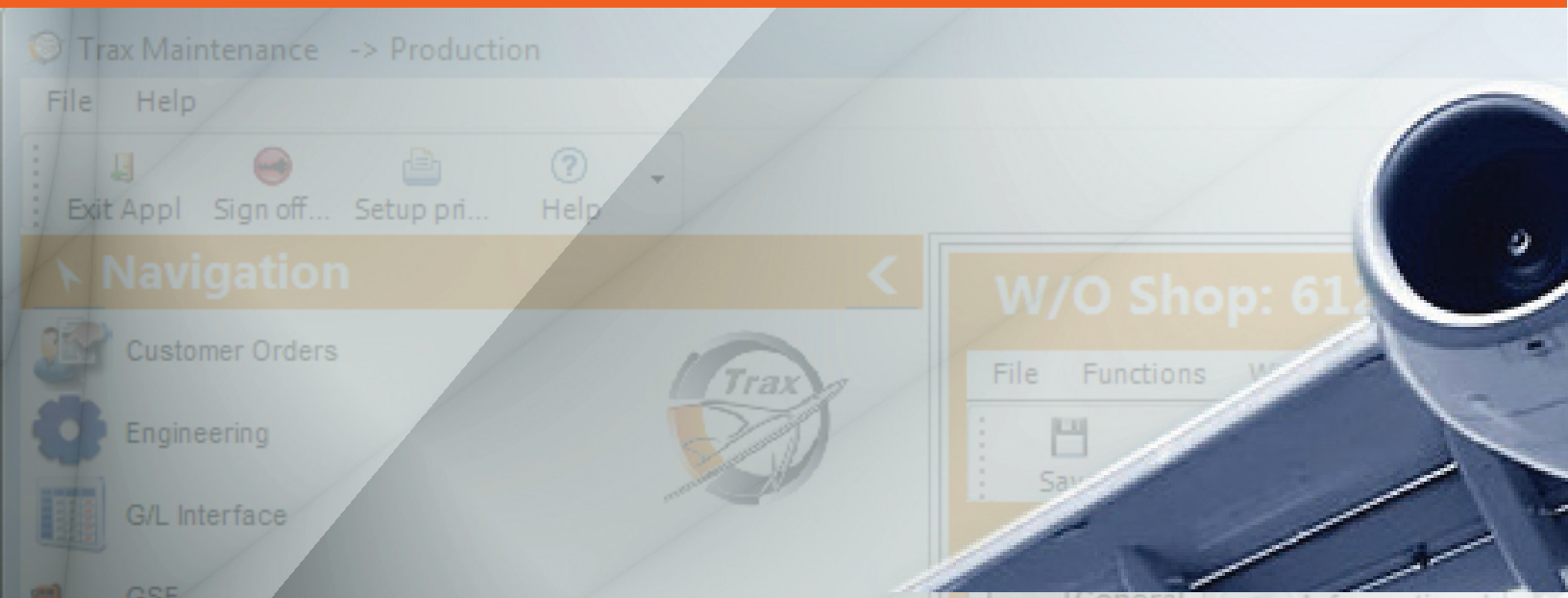


# Trax

TRAX is well known within the aviation maintenance community as the bestselling MRO software on the market. TRAX is a comprehensive MRO ERP software designed to cater to virtually every aspect of aircraft maintenance. The TRAX Maintenance and Engineering solution has been developed with our users to provide the most comprehensive and advanced maintenance software solution available today, with the most impressive sales and implementation record of any MRO ERP software provider ever. TRAX continues to be committed to providing the finest software solution and services to its airline and MRO customers around the world.

TRAX Maintenance is a fully integrated product which allows complete information flow between the modules in the system. The software provides the means to manage and maintain all information generated by a maintenance organization.

Hardware and operating systems can be chosen to meet your specific requirements. Utilizing the latest Web technology, the TRAX application can also be entirely accessible via the internet. A native Windows interface provides your users with a simple and easy to operate application. In addition, the TRAX mobile solution (TraxM) gives you customized access to the most needed Trax capabilities when you're on the go such as mobility, real-time functionality, modern usability and security.





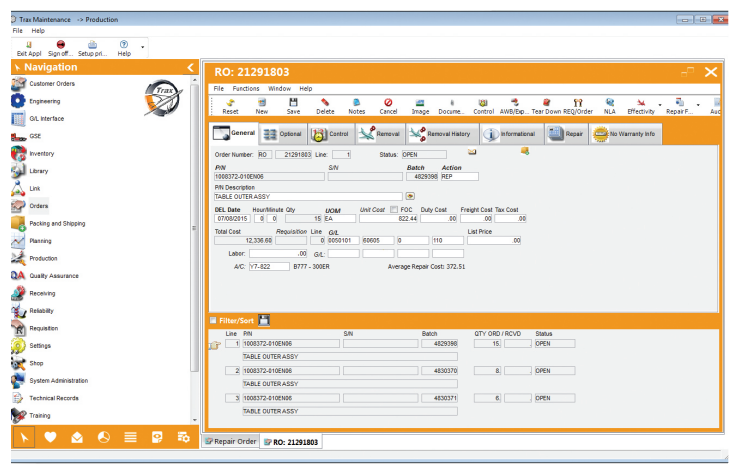
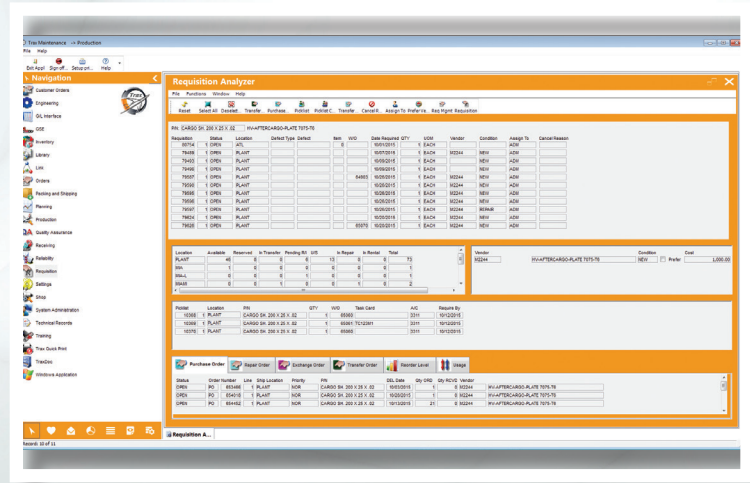


***Trax Maintenance and Engineering solution is a comprehensive MRO ERP software designed to cater to virtually every aspect of aircraft maintenance management.***



## THE REQUISITION MODULE »

Real time creation of requisitions allows complete monitoring of all company part requirements. Requisitions automatically generate Inventory Transactions as defined by predetermined reorder level requirements. Requisition information can be tied to orders and updates upon satisfaction of such requirements. The electronic quoting system provides a way to send and receive quotes via email or Spec2000 transactions.

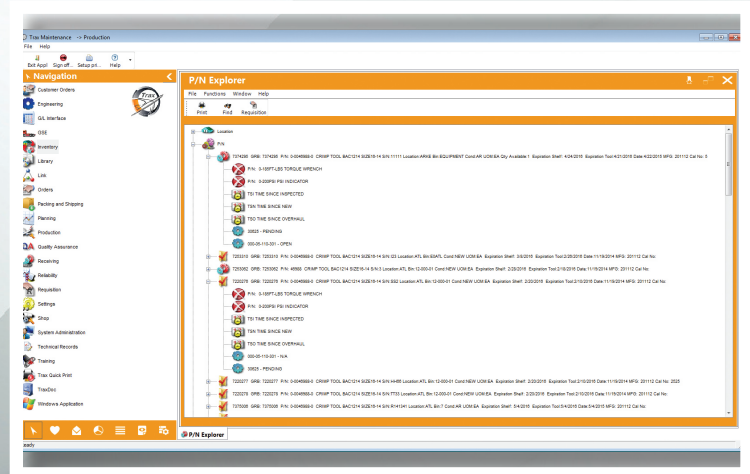


## « THE ORDERS MODULES

The Orders module empowers you to create and monitor the following types of orders: Contract Order, Exchange In/Out Order, Loan Order, Purchase Order, Service Order, Repair Order, Customer Order, Rental Order, Manufacturer Order, Warranty Claim Order, Transfer Order and Insurance Claim. Receiving and Inspecting can be performed as required. Online vendor performance is graphically monitored. Electronic Ordering via Spec2000 is available as standard. Various connections to industry purchasing portals are also supported.

## THE INVENTORY MODULE »

This functionality gives you the ability to control inventory within your organization from the basic part requirement through to warehousing, reserving and issuing of parts such as serialized, non-serialized and kits. Multiple locations can be optimized for minimum inventory, thus reducing cost. You can also track the Packing and Shipping of parts with this module. Rotable and Consumable inventory optimization functions provide detailed analysis of part movements within the company and give recommendations on buying new stock or selling surplus stock according to the operational requirements. Bar coding and RFID are supported for tracking of materials through your organization.



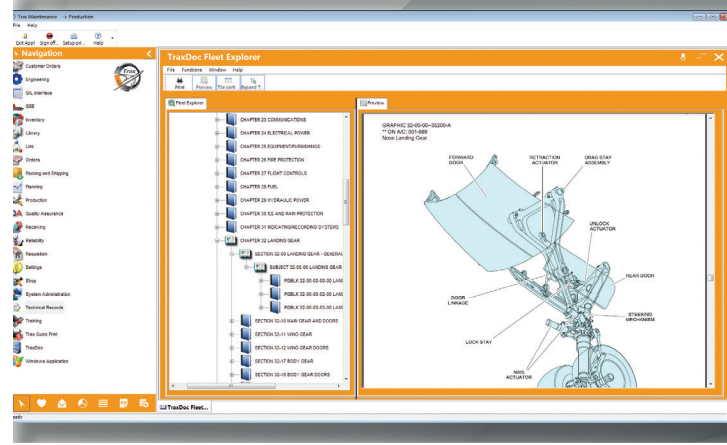
## THE FINANCIAL INTERFACE MODULE

The Finance module provides an interface with companies' financial software (such as General Ledger, Accounts Payable, and Receivable systems) to feed them information. The system keeps tight and accurate control over all financial information and produces journal entries for all financially related activity within the system. The fixed asset menu option provides valuation and depreciation data. Monthly balances, stock valuations, and financial budgeting are all accessible within the system.

## THE LINK MODULE

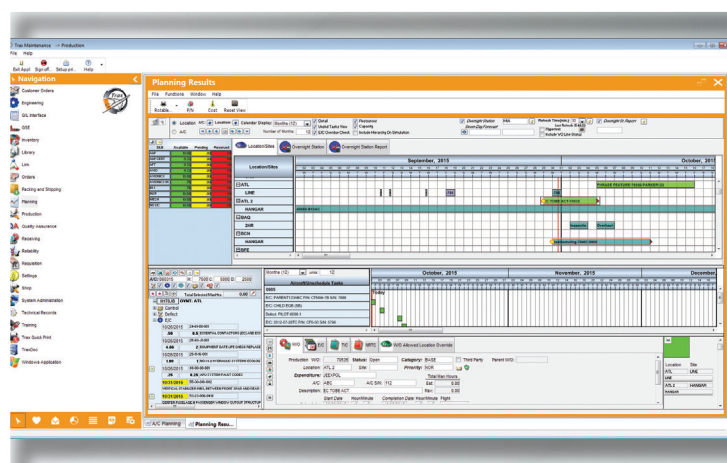
This subset of the Finance module allows the tracking and online authorization of invoices received for orders. It provides an efficient system-based communication method between Accounts and Purchasing for the three-way match of the order, receipt, and invoice. Tolerance levels can be set to allow for automatic approval of invoices to have the correct pricing. Electronic invoice data can be sent and received via Spec2000 or Invoiceworks.





## THE ENGINEERING MODULE »»

The Engineering suite harnesses the power to manage maintenance requirements along with manufacturers and aviation authority documents. Engineering information can be recorded and maintained within the system. Items such as Manufacturers' ADs and SBs can be tracked along with their individual effectivity and schedules. Task Cards can be entered into the system as well as associated documentation and requirements maintained with the original information. Task feedback can be provided electronically from the shop floor and schedules can be adjusted where appropriate according to the results. The utilization of technology allows for scanning to be used to assist in the work process. Electronic upload of data from manufacturers for MPD and AMM Tasks is also an excellent time saving feature. The system also includes the ability to load Aircraft readiness logs, manage configuration data, Structural Sampling information, and control time pro-rating on component inspections.

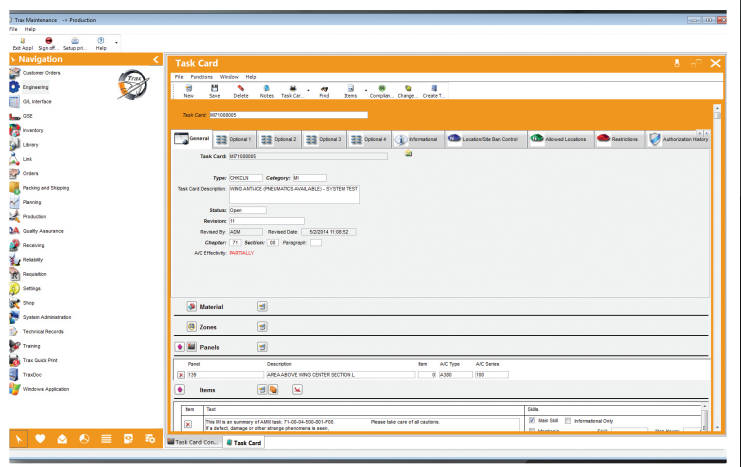


## THE TECHNICAL RECORDS MODULE »»

Implementing lean processes and reducing costs are an operator's foremost concerns these days. The Technical Records module gives you the facility to record all associated aircraft technical information regarding aircraft flights, components installed, and defects reported. Complete control of MELs against aircraft and an intuitive Aircraft Maintenance Control Panel provide excellent tools for the operation. E-Enabled aircraft can transmit data into TRAX also, such as CMC messages, flight data, and engine information. Damage charts can be recorded graphically within the system. New technology aircraft with 'Software Configuration Control' can be maintained within the system directly.

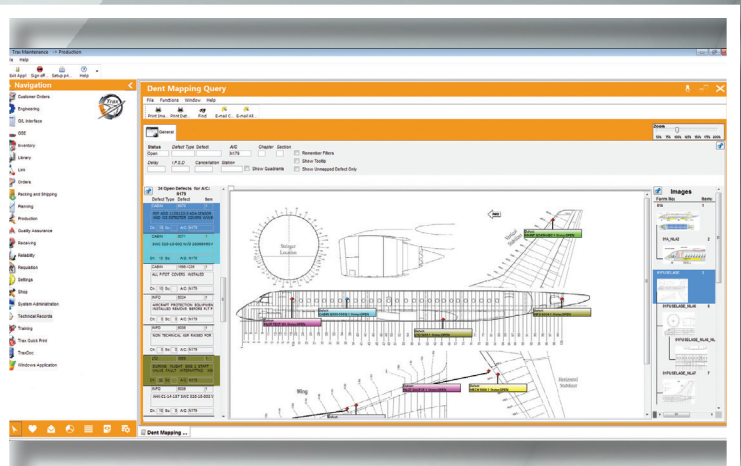
## « THE TRAXDOC MODULE

TraxDoc is a complete digital document management system used for the loading of manufacturer documentation (AMM, IPC, EMM, MPD and others). The system allows the automatic creation of data from these sources (such as Maintenance Programs, Task Cards, and Part Master Configurations). In addition to this, any other hard copy (scanned) or digital information such as documents, videos, photos, and files can be stored. Data can be interfaced directly from OEM systems. The module allows for security restrictions to various users or departments according to document type. TraxDoc negates the need for separate Digital Documentation Management systems within the Maintenance department, thus saving significant purchase, integration and support costs for the organization.



## « THE PLANNING MODULE

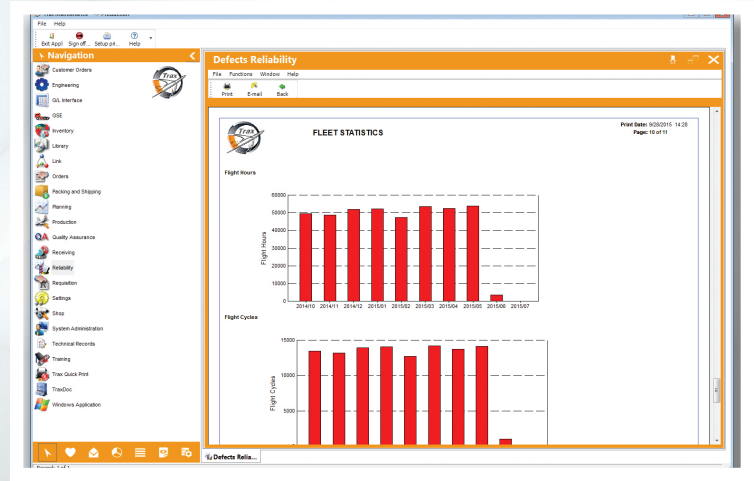
The highly efficient Planning module allows for interrogation of all controlled items within the system – from Aircraft defects to time-controlled items and components from the Engineering section – to provide due lists according to average or actual aircraft flying patterns. Aircraft and component checks, inspections, modifications, and maintenance can be forecasted, and work specifications can be produced online in real time. Deferred Defects on the aircraft can be monitored within this module, along with all other aircraft related time controlled items. The graphical interface allows users to see at a glance all information related to the maintenance of the aircraft, including hangar slots, flying programs, material availability, and manpower resources. Short, medium, and long term planning are all catered for within the module.





## THE RELIABILITY MODULE »

Management and Aviation Authority requirements can be met by the collection of reliability information directly from the TRAX System without the need for additional software packages to interface with the data. Using data from many areas in the system, this module will provide reporting capability on defects and components. Recurrent items (including system defects and component removals) on aircraft can be graphically tracked. ATA Spec2000 Chapter 11 is built inside the system to provide electronic data directly to the aircraft manufacturers in the format that they want, enabling them to give you faster and more accurate feedback.



## THE PRODUCTION CONTROL MODULE

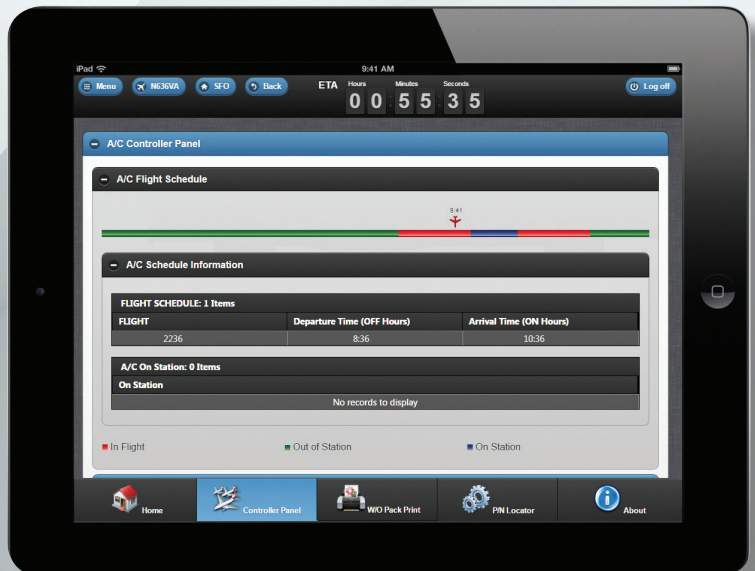
Improving and maximizing productivity, along with cost savings, are the hallmarks of the TRAX Maintenance software. As such, the Production module provides all of the necessary functionality to effectively prepare your work requirements. Production is a complete work control system which allows for shop floor data collection and total cost monitoring, for your organization and for third party work. The third party customer invoicing module allows for MRO providers to have full and flexible control over the billing cycle. Electronic Signatures have been incorporated to allow digital sign-off for maintenance on aircraft and components.

## THE SHOP MODULE

The Shop module, which focuses primarily on components, contains all the functionality you encounter in shop environments. Engine Overhaul capability allows for multi-level work orders to be produced, and third party maintenance can be consolidated into one billing for the customer. The creation of work packs for component repairs/overhauls is easily accomplished with the capability to pass work through a number of different sites or workshops. Online electronic documentation can be viewed and printed as required, such as MM, OHM, etc. Electronic signature is also available for the signing-off of work on components.

## Trax M »

The TRAX mobile module (TraxM) allows you to stay connected wherever you are, whether in the office, the worksite, or anywhere in-between. TraxM lets you wirelessly manage your aircraft fleet from your mobile device. Access to information and the ability to perform real-time operations from wherever your workforce goes will be a major benefit to your operation. With TraxM you have the mobility whilst remaining fully integrated with the Trax System, maximizing your productivity, and streamlining your processes.







***Trax is the number one globally utilized MRO ERP software for aircraft maintenance solutions.***

### **THE LIBRARY MODULE**

The comprehensive Library module provides the necessary capability to effectively monitor all technical manuals and documentation within your organization. A workflow system allows routing of items to required departments, with full revision control and monitoring capability for partial and permanent revisions. Library offers customers a means of communicating company memos, revisions to manuals, as well as company notifications with the Read & Sign feature.

### **THE QUALITY ASSURANCE MODULE**

The Quality Assurance module is an effective internal and external evaluation program that will bring benefits that go beyond regulatory compliance. The discipline, structure and added oversight afforded through these evaluations can provide better management information and controls, leading to increased efficiency. Supplier audits are automated to prevent the purchase or receipt of goods from unapproved suppliers. Aircraft, Internal, and Employee audits provide an audit tracking service to maintain compliance to regulatory requirements.

### **THE TRAINING MODULE**

The Training module provides online employee training recordkeeping. Electronic copies of licenses are maintained within the database, including all relevant expiry dates. Scheduling for training and employee notification of training availability is supported. The training planning screen provides a short or long term view of what will be required for the organization (including any relevant external contractor training). Automatic reminder notifications for employees whose licenses are expiring are provided. The ability to manage your workforce's skills efficiently is a great benefit to your organization.

### **THE GSE MODULE**

The GSE module allows for the planning, maintenance and tracking of Ground Service Equipment and units. Multi GSE types can be tracked – with the facility to monitor hours on equipment and plan work according to days and hours schedules. Separate purchasing and inventory management functions (and security controls) are available for GSE Inventory Type. The GSE module has similar functionality to the various TRAX modules as they apply to your Ground Service Equipment but all contained in a separate security controlled module.





**Trax USA Corp.**  
2601 S. Bayshore Drive  
Suite 500  
Miami, FL 33133  
USA  
Phone: +1 (305) 662.7400  
Fax: +1 (305) 468.6187

**TRAX UK**  
Phone: +44 1403.275353

[www.trax.aero](http://www.trax.aero)  
[sales@trax.aero](mailto:sales@trax.aero)